



Jack Richeson
& Co., Inc.

920-738-0744 (P)
920-738-9156 (F)
www.richesonart.com



RICHESON OILS *The Shiva Series*

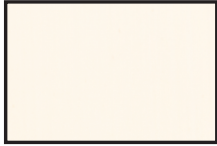
Most affordable
professional oils
on the market!

- Traditional Old World pigments
- Professional quality, economically priced
- Brilliant, rich colors
- Buttery, reliable consistency
- High permanency, free from fading, darkening, yellowing and cracking
- Available in 70 colors

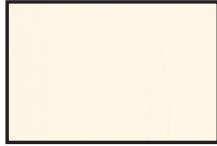
Professionally formulated to satisfy the most discerning master painter!

RICHESON OILS

The Shiva Series ~ Available in 70 colors in 1.25oz and 5oz.



120000 / 120059
LF1 - S1
Titanium White
PW6 Titanium Dioxide
PW41 Zinc Oxide



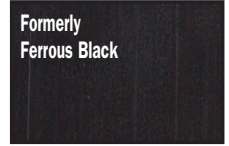
120001 / 120060
LF1 - S1
Zinc White
PW4 Zinc Oxide



120002 / 120063
LF1 - S1
Ultra White
PW6 Titanium Dioxide
PW4 Zinc Oxide



120003 / 125003
LF1 - S1
Ivory Black
PBk9 Bone Black



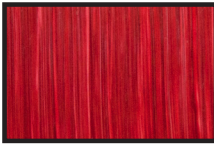
120004 / 125004
LF1 - S1
Mars Black
PBk11 Synthetic Iron Oxide



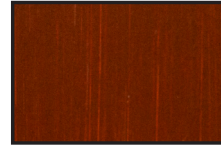
120005 / 125005
LF1 - S2
Payne's Gray
PBk9 Bone Black
PBk7 Carbon Black
PB29 Sod Alum Sulph



120006 / 125006
LF1 - S1
Light Red
PR102 Natural Iron Oxide
PR101 Synth Iron Oxide



120007 / 125007
LF3 - S3
Alizarin Crimson
PR83 1,2-Dihydroxy-anthraquinone Lake



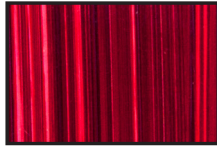
120008 / 125008
LF1 - S1
Venetian Red
PR102 Nat Iron Oxide
PR101 Synth Iron Ox



120009 / 125009
LF1 - S5
Quinacridone Rose
PR122 Quin Red
PV19 Quinacridone



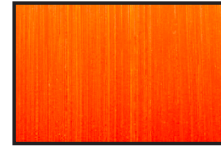
120010 / 125010
LF1 - S4
Cadmium Red Deep
PR108:1 Cad Seleno-Sulfide
Cocoprecipated w/Barium Sulfate



120011 / 125011
LF3 - S3
Rose Madder
PR83 1,2-Dihydroxyanthraquinone
Lake / PY3 Arylide Ylw 10G



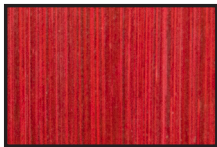
120012 / 125012
LF1 - S4
Cadmium Red Scarlet
PR108:1 Cad Seleno-Sulfide
Cocoprecipated with Barium Sulfate



120013 / 125013
LF1 - S4
Cadmium Red Pale
PR108:1 and P020:1 Cad Seleno-Sulfide
Cocoprecipated w/Barm Sulfate



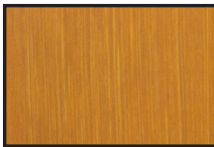
120014 / 125014
LF2 - S2
Naphthol Red Medium
PR170 Naphthol Carbamide



120015 / 125015
LF3 - S2
Shiva Red Crimson
PR83 1,2-Dihydroxyanthraquinone
Lake / PV19 Quinacridone



120016 / 125016
LF1 - S2
Flesh Tint
PW6 Titanium Dioxide
PY42 Synthetic Iron Oxide



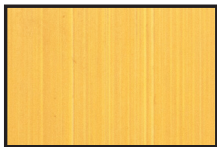
120017 / 125017
LF1 - S1
Yellow Ochre
PY42 Synth Iron Oxide
PY43 Natural Iron Oxide



120018 / 125018
LF1 - S1
Cadmium Yellow Light PR35:1
Cadmium Seleno-Sulfide Coprecipated
with Barium Sulfate



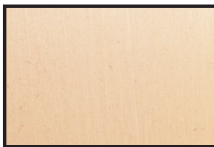
120019 / 125019
LF1 - S1
Cad Yellow Medium
PY35:1 Cad Seleno-Sulfide
Cocoprecipated w/Bar Sulfate
PY65 Arylide Yellow RN



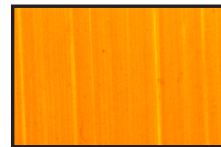
120020 / 125020
LF1 - S2
Naples Yellow
PY74 Arylide Ylw Titan
PW6 Dioxide
PY42 Synth Iron Oxide



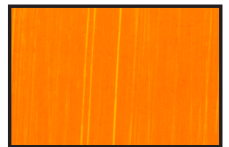
120021 / 125021
LF1 - S3
Indian Yellow
PY83 Diarylide Yellow HR70



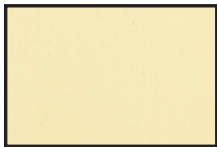
120022 / 125022
LF1 - S1
Unbleached Titanium
PW6 Titan Dioxide
PY42 Synth Iron Oxide
PBk7 Nat Iron Ox
PY3 Arylide Ylw 10G



120023 / 125023
LF1 - S4
Cadmium Orange
P020:1 Cadmium
Seleno-Sulfide Coprecipated
w/Bar Sulfate



120024 / 125024
LF3 - S2
Shiva Orange
P016 Diarylide Orange
PY65 Arylide Ylw RN



120025 / 125025
LF1 - S2
Brilliant Yellow Light
PW6 Titanium Dioxide
PY3 Arylide Ylw 10G



120026 / 125026
LF2 - S2
Shiva Yellow Citron
PG17 Chromium Oxide
PW6 Titanium Dioxide
PY3 Arylide Ylw 10G



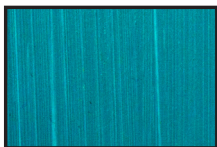
120027 / 125027
LF2 - S2
Hansa Yellow
PW6 Titanium Dioxide
PY1 Arylide Yellow G



120028 / 125028
LF2 - S2
Hansa Yellow Medium
PY65 Arylide Yellow RN
PY3 Arylide Yellow 10G



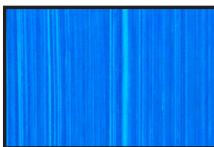
120029 / 125029
LF2 - S2
Hansa Yellow Pale
PY3 Arylide Yellow 10G
PW6 Titanium Dioxide



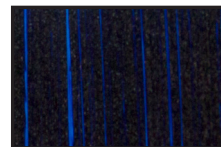
120030 / 125030
LF1 - S2
Turquoise
PG7 Chlorinated Cooper
PB15 Phthalocyanine Copper
PW6 Phthal Titan Dioxide



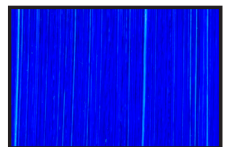
120031 / 125031
LF1 - S6
Cerulean Blue
PB36 Oxides of Cobalt
and Aluminium



120032 / 125032
LF1 - S5
Cobalt Blue
PB28 Oxides of Cobalt
and Aluminium



120033 / 125033
LF1 - S2
Prussian Blue
PB27 Ferric Ammonium
Ferrocyanide

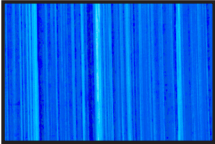


120034 / 125034
LF1 - S2
Ultramarine Blue Deep
PB29 Sodium Aluminium
Sulphosilicate

Lightfastness: (LF)
 Excellent I Very Good II Fair III
Series: (S)
 1, 2, 3, 4, 5, 6

Richeson Oils 16oz

120065 16oz Titan. Zinc White
120066 16oz Titanium White
120067 16oz Zinc White



120035 / 125035
LF1 - S2 Ultramarine Blue Light
 PB29 Sodium Alumino Sulphosilicate



120036 / 125036
LF1 - S2 Ice Blue
 PW6 Titanium Dioxide
 PB27 Ferric Ammonium Ferrocyanide
 PBr7 Natural Iron Oxide



120037 / 125037
LF1 - S2 Formerly Shiva Blue Deep
 PB15 Copper Phthalocyanine



120038 / 125038
LF1 - S2 Formerly Shiva Blue Light
 PB15:4 Copper Phthalocyanine



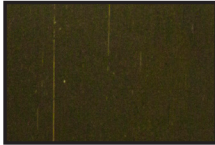
120039 / 125039
LF1 - S6 Cobalt Violet Light PV49
 Cobalt Ammonium Phosphate



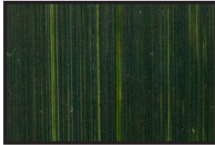
120040 / 125040
LF1 - S3 Manganese Violet
 PV16 Manganese Ammonium Phosphate



120041 / 125041
LF1 - S2 Formerly Shiva Violet Deep
Dioxazine Violet
 PV23 Dioxazine
 PB29 Sodium Alumino Sulphosilicate



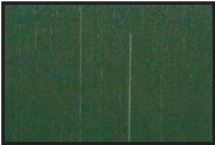
120042 / 125042
LF1 - S2 Formerly Shiva Green
Olive Green
 PG17 Chromium Oxide
 PBk9 Bone Black
 PY65 Arylide Yellow RN



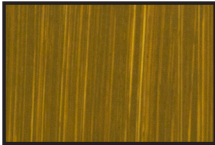
120043 / 125043
LF1 - S2 Sap Green
 PG7 Chlorinated Cooper
 PY74 Phthalocyanine Arylide Ylw
 PBk7 Carbon Black



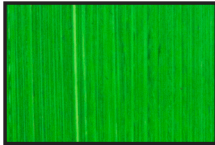
120044 / 125044
LF1 - S4 Viridian
 PG18 Hydrated Chromium Oxide



120045 / 125045
LF1 - S2 Terra Verte
 PG17 Chrom Oxide / PW6 Titan Dioxide / PBK11 Synth Iron Ox / PB29 Sod Alum Sulpho



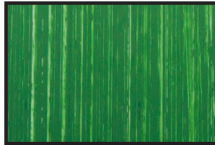
120046 / 125046
LF1 - S2 Leaf Green
 PY65 Arylide Yellow RN
 PBK11 Synthetic Iron Oxide



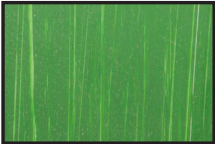
120047 / 125047
LF1 - S4 Cadmium Green
 PY35:1 and PG7 Cad Seleno-Sulfide Coprecipitated w/Barium Sulfate



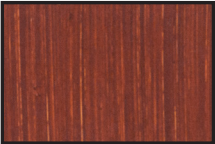
120048 / 125048
LF1 - S2 Formerly Shiva Green
Phthalo Green - BluShd
 PG7 Chlorinated Cooper Phthalocyanine



120049 / 125049
LF1 - S3 Chrome Oxide Green Deep
 PG17 Chromium Oxide



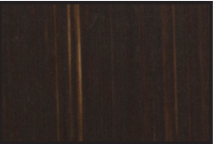
120050 / 125050
LF1 - S3 Chrome Oxide Green Light
 PG17 Chromium Oxide
 PW6 Titanium Dioxide



120051 / 125051
LF1 - S1 Burnt Sienna
 PR102 Natural Iron Oxide



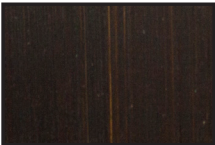
120052 / 125052
LF1 - S1 Burnt Umber
 PBr7 Natural Iron Oxide



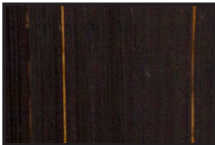
120081 / 125081
LF1 - S1 Burnt Umber Cool
 PBr7 Natural Iron Oxide



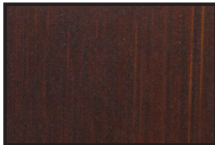
120053 / 125053
LF1 - S1 Raw Sienna
 PY43 Natural Iron Oxide



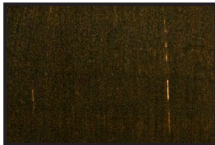
120054 / 125054
LF1 - S1 Raw Umber
 PBr7 Natural Iron Oxide



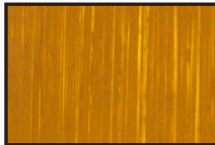
120082 / 125082
LF1 - S1 Raw Umber Cool
 PBr7 Natural Iron Oxide
 PBk26 Manganese Ferrite Black



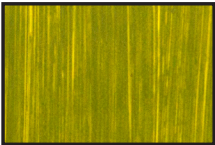
120055 / 125055
LF1 - S3 Asphaltum
 PR101 Synth Iron Ox
 PBk9 Bone Black
 PY74 Arylide Yellow



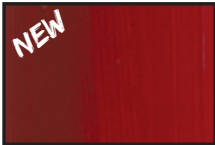
120056 / 125056
LF1 - S1 Van Dyke Brown
 PR102 Natural Iron Oxide PBr7
 Natural Iron Oxide



120057 / 125057
LF1 - S1 Golden Ochre
 PY42 Synthetic Iron Oxide



120058 / 125058
LF1 - S2 Green Gold
 PG17 Chromium Oxide
 PY65 Arylide Yellow RN



120083 / 125083
LF1 - S4 Permanent Alizarin
 PR177 Anthraquinoid Red



120084 / 125084
LF1 - S3 Quinacridone Red
 PV19 Quinacridone



120086 / 125086
LF1 - S2 Quinacridone Magenta
 PR122 Quin Red



120087 / 125087
LF1 - S3 Quinacridone Violet
 PV19 Quinacridone



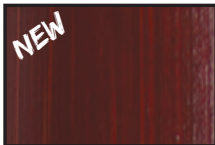
120088 / 125088
LF1 - S2 Naphthol Red Light
 PR112 Naphthol Red AS-D



120089 / 125089
LF1 - S2 Ultramarine Violet
 PV15 Sodium Alumino Sulphosilicate



120090 / 125090
LF1 - S2 Phthalo Green - YlwShd
 PG36 Copper Phthalocyanine Complex



120091 / 125091
LF1 - S3 Transp. Red Oxide
 PR101 Synth Iron Ox



120092 / 125092
LF1 - S3 Transp. Yellow Oxide
 PY42 Synthetic Iron Oxide

RICHESON OILS

The Shiva Series



Richeson Oil Sets

Basic Set of 6 (shown at right)

Includes 1.25oz. tubes of: titanium white, ivory black, naphthol red medium, hansa yellow, ultramarine blue, and phthalo green-blue shade. **#120068**

Master Signature® Set of 6 (shown at right)

Includes 1.25oz. tubes of: titanium white, prussian blue, yellow ochre, sap green, burnt umber and cadmium red scarlet. **#120999**

Wooden Box Set of 6

Contains the same colors as above, but this assortment comes packaged in an elegant, slide-top wooden box. **#120079**

Wooden Box Set of 12

This set of 12 contains 1.25oz tubes which are presented in a wooden slide-top box. The included colors are: titanium white, ivory black, rose madder, naphthol red medium, yellow ochre, Shiva orange, hansa yellow, phthalo blue deep, dioxazine violet, phthalo green-blue shade, burnt sienna, and burnt umber. **#120080**



Grey Matters & Linseed Soap: the perfect pairing!

Grey Matters Paper Palette

- Acid free smooth surface
- Toned in neutral grey for artists who work on a toned surface
- Great backdrop for viewing and mixing
- Especially great for transparent colors

#100279 30shts 6" x 9" **#100281** 50shts 12" x 16"

#100280 50shts 9" x 12" **#100289** 30shts 16" x 20"

Jack's Linseed Studio Soap

- Use to clean brushes, hands, floors, work surfaces and more!
- Made from naturally refined linseed oil
- No harsh chemicals
- Cleans and conditions oil brushes

#120735 1oz. (30ml) **#120750** 16oz. (500ml)

#120740 4oz. (120ml) **#120755** 32oz. (1000ml)

#120745 8oz. (250ml)



Item #100280
50 SHEETS
7 17304 00018 3

Jack Richeson & Co., Inc.

Neutral grey sheets for accurate color mixing
Color mixing guide inside
Patent pending
(See inside for more information.)

12" x 12" / 229mm x 305mm / 35lb.

GREY MATTERS™

PAPER PALETTE

DE PAPIER | PALETA DE PAPEL

Jack Richeson & Co., Inc. | 557 Marcella Street | Kimberly, WI 54136 USA

WHY USE A TONED PALETTE AND SURFACE?

When color mixing goes as planned and an artist's palette shows their vision in a variety of painting media, the final result is a masterpiece. The same neutral color of this disposable palette allows the artist to see each color as it is. The neutral color of this disposable palette allows the artist to see each color as it is. The neutral color of this disposable palette allows the artist to see each color as it is.

PAINTER'S GUIDE TO COLOR by STEPHEN QUILLER

COLOR BASICS

11 (Black) ... 10 ... 9 ... 8 ... 7 ... 6 ... 5 ... 4 ... 3 ... 2 ... 1 (White)

COMPLEMENTARY COLORS

Color	Value	Complementary Color
11 Black	0	White
10 Dark Blue	1	Yellow
9 Blue	2	Orange
8 Blue-Green	3	Red
7 Green	4	Purple
6 Green-Yellow	5	Pink
5 Yellow	6	Blue
4 Yellow-Orange	7	Blue-Green
3 Orange	8	Green
2 Red-Orange	9	Blue-Black
1 White	10	Black

OTHER PRODUCTS AVAILABLE:

- Quiller's Color Line
- Quiller's Watercolor Paper
- Quiller's Color Wheel
- Quiller's Watercolor Palette
- Quiller's Watercolor Brushes